

# CARRE 80 (L)

Build in textile frame

NF-04810 Silver

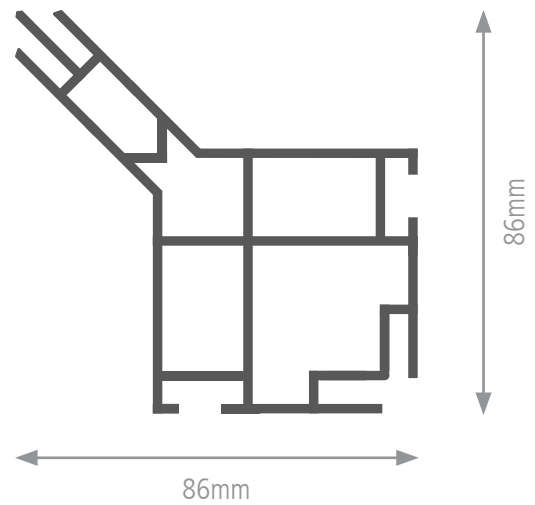
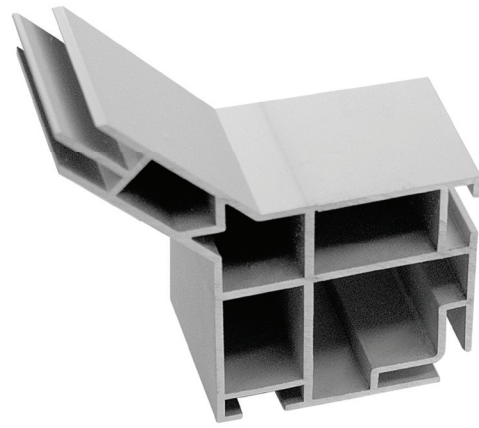
## Colors:



Silver

Available in every color on request.

**Application:** Freestanding  
**Width:** 86mm  
**Length:** 6150mm  
**Weight:** 2,206 kilo/meter  
**Option:** Stabilizers for optimum reinforcement

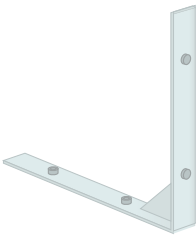


Double-sided textile frame, designed for freestanding and suspended use. Your textile print closes almost seamlessly in the corners to create a perfect, tight design. Various accessories can be applied in a simple way.

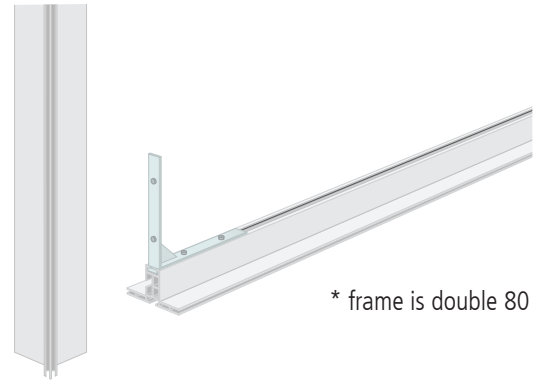
- Endless opportunities
- Perfect for exhibition stands
- Ideal to create large banners
- Textile print inside and outside
- Stabilizers for optimum reinforcement



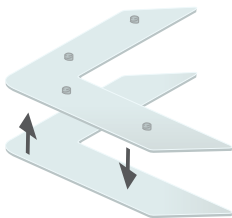
**FK-0280**



**FK-0280**

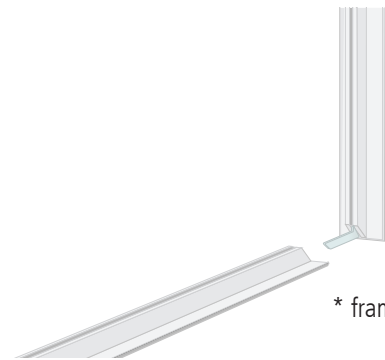


\* frame is double 80



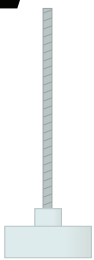
**FK-0200**

Each frame is delivered with the right amount of locksets heavy.



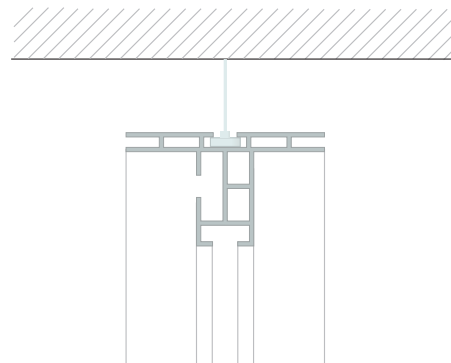
\* frame is double 80

**Optional**



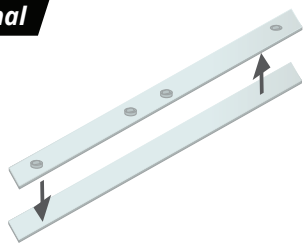
**FK-7900**

Suspended from ceiling.



\* frame is double 80

**Optional**

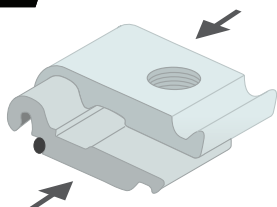


**FK-0500**

If the length of the frame is longer than 4 meters, an extension set (FK- 0500) is included.

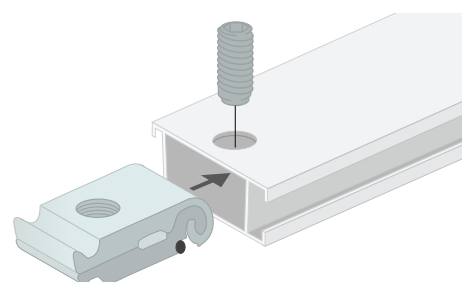


**Optional**

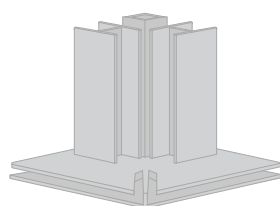


**FK-0220**

When connecting the stabilizer, first place the lockset in the channel.

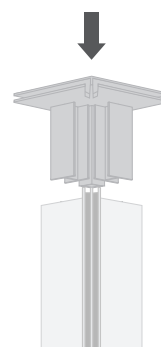


Then put the stabilizer (NF- 04438) on the lockset, now tighten the screw with the delivered allen key.

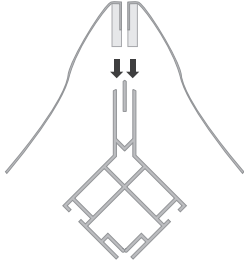


**FK-0725**

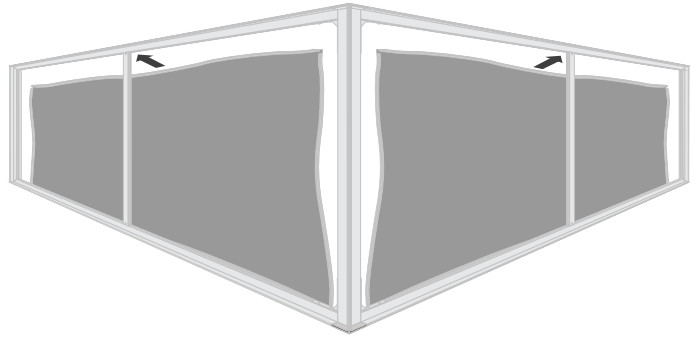
Endcap for all corners of the frame.



Place the endcap on top or bottom of the frame.



Place the textile print in the frame. Start with the corners and press the silicone strip in the channel



## EXHIBITION STAND

Illustration of the Carre 80 (L)  
in use as an exhibition stand

