

CARRE 80 (U)

Build in textile frame

NF-04810 Silver

Colors:



Silver

Available in every color on request.

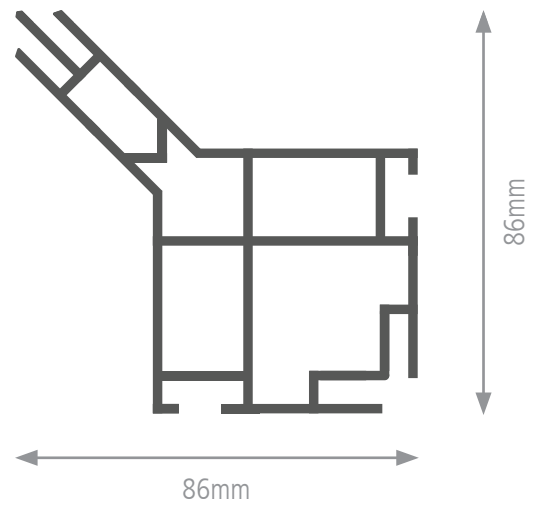
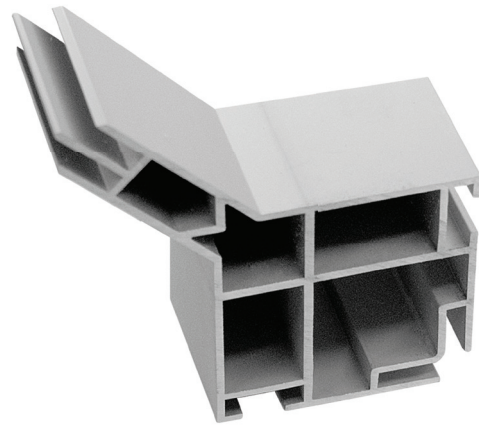
Application: Freestanding and suspended from ceiling

Width: 86mm

Length: 6150mm

Weight: 2,206 kilo/meter

Option: Stabilizers for optimum reinforcement

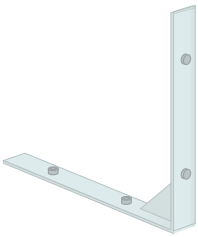


Double-sided textile frame, designed for freestanding and suspended use. Your textile print closes almost seamlessly in the corners to create a perfect, tight design. Various accessories can be applied in a simple way.

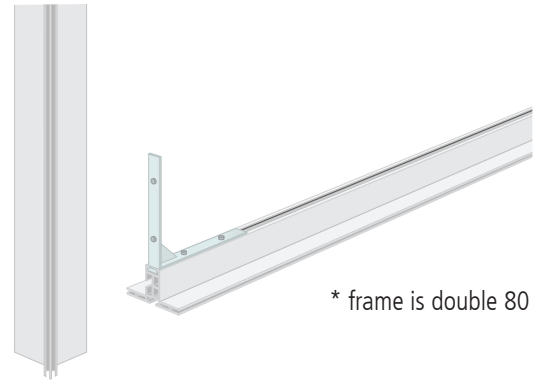
- Endless opportunities
- Perfect for exhibition stands
- Ideal to create large banners
- Textile print inside and outside
- Stabilizers for optimum reinforcement
- Standing and suspended use



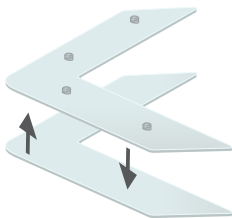
FK-0280



FK-0280

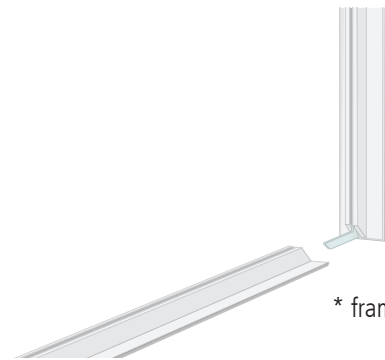


* frame is double 80



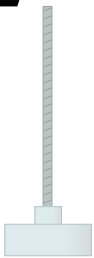
FK-0200

Each frame is delivered with the right amount of locksets heavy.



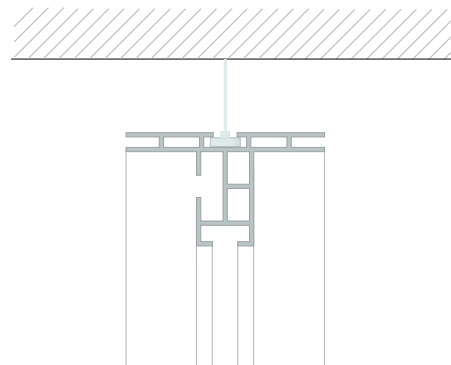
* frame is double 80

Optional



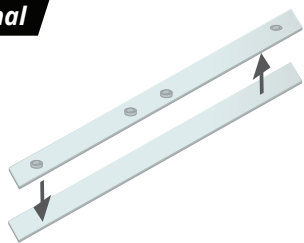
FK-7900

Suspended from ceiling.



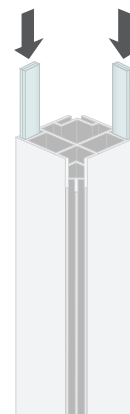
* frame is double 80

Optional

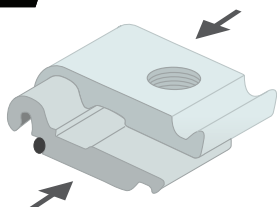


FK-0500

If the length of the frame is longer than 4 meters, an extension set (FK- 0500) is included.

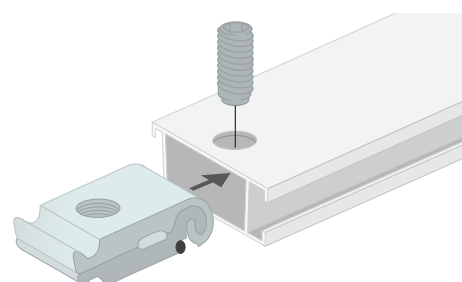


Optional

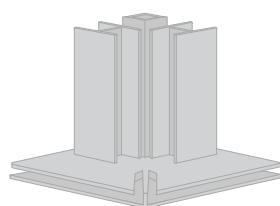


FK-0220

When connecting the stabilizer, first place the lockset in the channel.

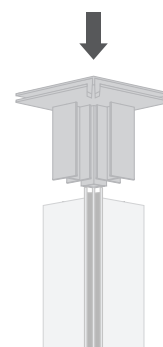


Then put the stabilizer (NF- 04438) on the lockset, now tighten the screw with the delivered allen key.

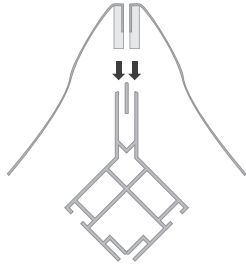


FK-0725

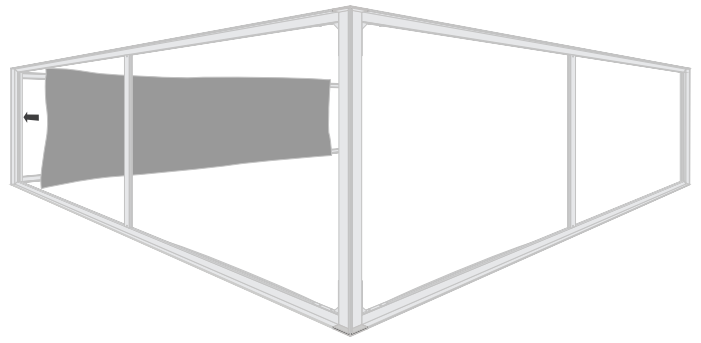
Endcap for all corners of the frame.



Place the endcap on top or bottom of the frame.



Place the textile print in the frame. Start with the corners and press the silicone strip in the channel



EXHIBITION STAND

Illustration of the Carre 80 (U)
in use as an exhibition stand

